



TEXAS
CENTRAL



ACCELERATING THE TEXAS ECONOMY

AT HIGH SPEED

TEXAS DOES BIG THINGS



**TRAINS WILL TRAVEL
AT SPEEDS NEARLY**

200

**MILES
PER HOUR**

**WILL
SERVE**

3

STATIONS

**DALLAS, BRAZOS VALLEY
AND HOUSTON**

**TRAINS WILL
LEAVE EVERY**

30

MINUTES

DURING PEAK HOURS

A sleek, white high-speed train with a blue stripe is shown in motion, blurred background suggesting speed. The train is on tracks, and the background consists of green hills and trees.

**NORTH TEXAS TO HOUSTON
IN LESS THAN 90 MINUTES**



Our Vision for the Station Area











HUGE BENEFITS TO TEXANS
CREATING A NEW HIGH-TECH INDUSTRY

A SIGNIFICANT INVESTMENT WITH BENEFITS ACROSS TEXAS

>\$10 BILLION

INVESTMENT

from the project's
infrastructure, design
and construction

\$36 BILLION

DIRECT IMPACT

from the economic
benefits the project will
generate over the
next 25 years

\$2.5 BILLION

TAX REVENUE

estimated to be paid by the
company to the state, counties,
local municipalities and
school districts



Project Magnitude: Construction on a Huge Scale



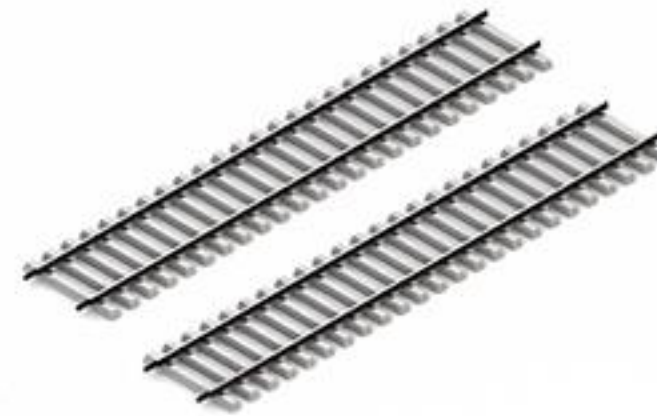
CONCRETE

The project will use nearly
3X the concrete used to
build the Hoover Dam



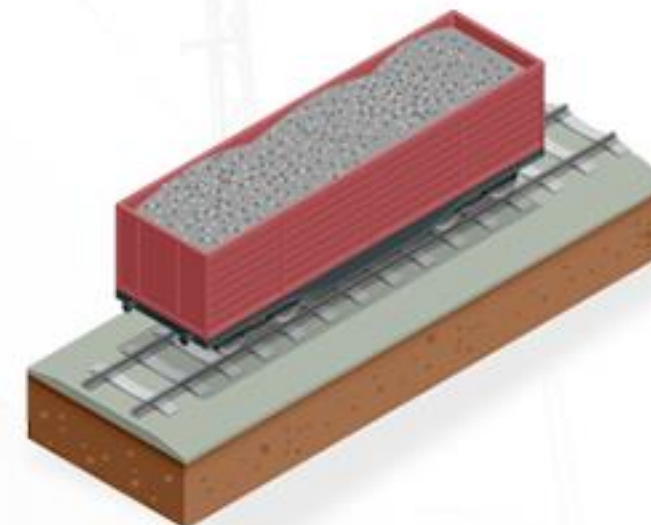
PRECAST CONCRETE TIES

The project will use
1.4 million



RAIL

The project will use enough
rail to cover the distance
from Houston to Phoenix



TRACK BALLAST

The project will use about
15,000 train cars worth of
track ballast



INDUSTRY CREATION

CREATE

10,000 JOBS

DURING EACH YEAR OF CONSTRUCTION

WITH AS MANY AS 1000 FULL-TIME ONCE OPERATIONAL.



TEXANS WANT MORE CHOICE,
LESS CONGESTION

POPULATION GROWTH + TRAFFIC CONGESTION =

NEED FOR RAIL





RELIABLE/CONVENIENT
COMFORTABLE
PRODUCTIVE



VARIABLE
PRICING
BASED ON
DEMAND



400
SEATS OPEN
EVERY
30 MINUTES



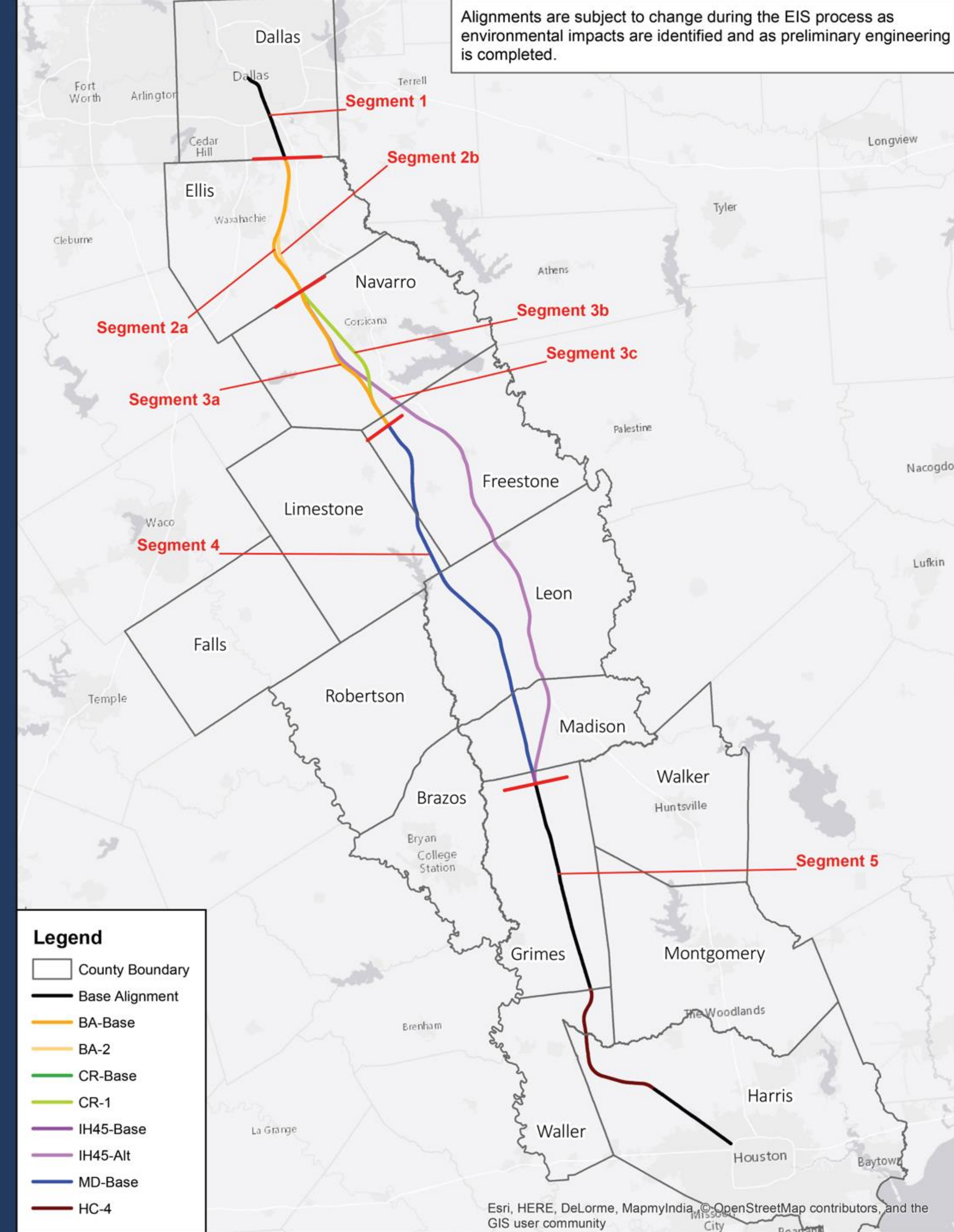
REGULATORY MILESTONES

**ENVIRONMENTAL
IMPACT STATEMENT**

**OPERATING AND
SAFETY RULES**

**ROUTE
SELECTION**

ROUTE MAP



COMMUNICATING WITH STAKEHOLDERS

28

Open Houses
in the last 18 months

Approximately

600

Speaking Engagements

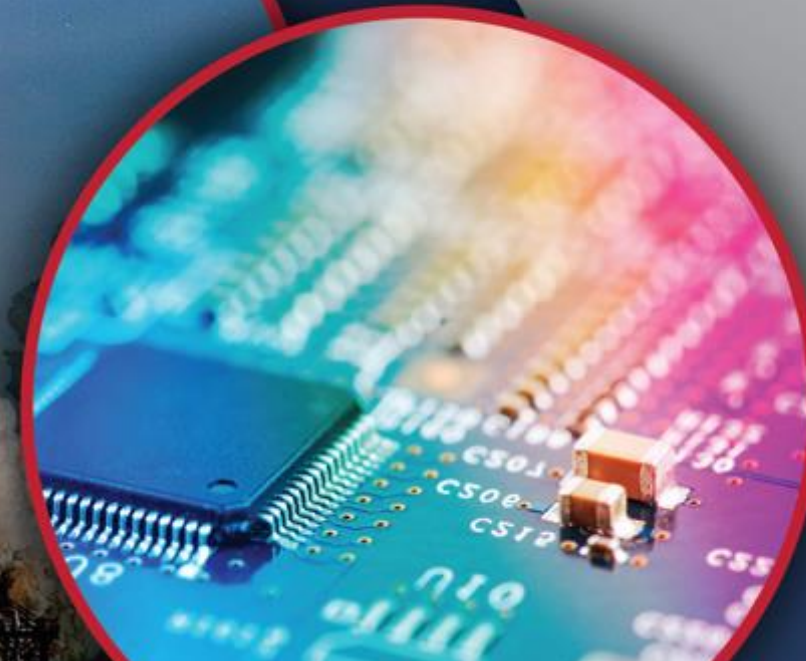
Supported by

26

Organizations across the state
and growing everyday



TEXAS DOES BIG THINGS



ACT NOW:
BE AN ADVOCATE
FOR TEXAS HIGH SPEED RAIL
TEXT **TRAIN** to 52886



TEXAS
CENTRAL

TexasCentral.com • Facebook.com/TexasCentral • Twitter.com/TexasCentral